

AA

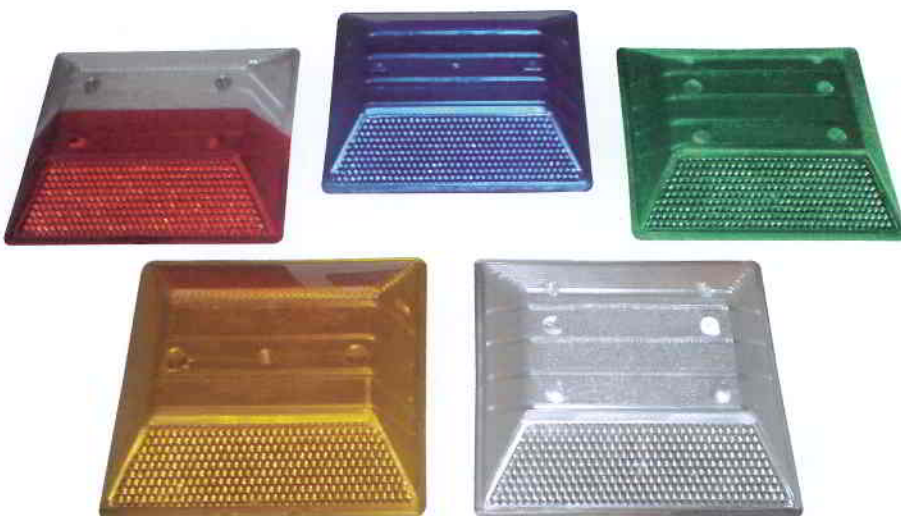
rayolite®

standard reflectors

DESCRIPTION

The AA is a standard type reflective pavement marker designed to offer maximum strength, high reflectivity and enhanced life cycle.

A rib and fish hook design makes for maximum adherence between the shell and fill material. A protective brow protects the top area of the lens from deterioration.



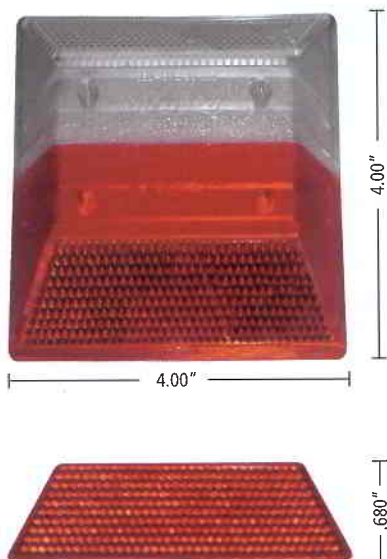
SPECIFICATIONS

Lens: True Cube-Corner type Reflex Reflector, molded of optic grade Methyl Methacrylate (plastic).

Reflective Area: 3.25 square inches.

Packed: 50 per carton.

Weight: Approximate weight 23 lbs. per carton.

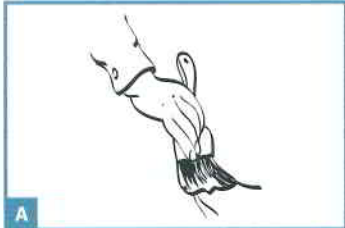


AA

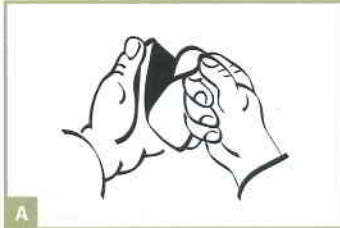
standard reflectors

Installation

Methods used to install Rayolite® Reflective pavement markers



A Clean and prime the surface area.



A Peel off the protective paper.



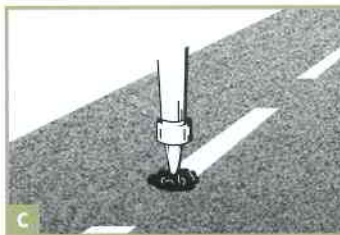
A Road surface should be dry. Place marker on the prepared road surface applying slight pressure until the marker contacts the road surface and forces a bead of epoxy or bituminous around all four corners.



B Prepare the surface by removing any loose materials from the road surface.



B Apply epoxy to the bottom of the marker, spreading evenly.



C Apply adequate amount of bituminous adhesive to the road surface.

- Cleaning Methods
- Types of Adhesive
- Final Step

Lens Type

Recognizing that complex traffic arteries require improved communication to motorists in daylight hours as well as during darkness, Rayolite® has incorporated daylight marking in its Reflective Pavement Markers by means of brightly colored and highly visible housings.

	Type B / 9702 two way clear		Type G / 9708 one way clear		Type DR / 9716 two way red
	Type C / 9704 clear and red		Type H / 9710 one way amber		Type X / 9720 amber and red
	Type D / 9706 two way amber		Type K / 9712 one way red		Type Z / 9724 clear and amber

Blue and Green also available.

rayolite

1010 Brice Street Newark, Ohio 43055
Phone: (740) 345 1300 Fax: (740) 345 1336 Toll Free: 1-800-848-7025

www.rayolite.com